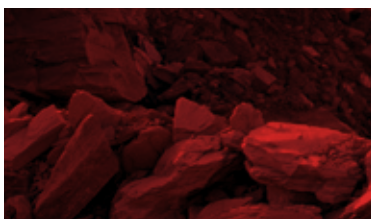
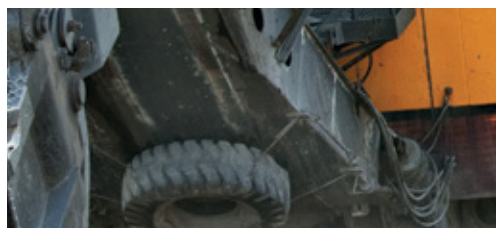




LVS

Fire suppression system

The ANSUL® LVS Liquid Agent Fire Suppression System suppresses fires in mobile equipment used in a wide range of industries including mining, forestry, waste management, transportation and others.



011 869 2142



sales@advancedfst.co.za



[@advancedfiresuppressiontechnologies](https://www.facebook.com/advancedfiresuppressiontechnologies)



[linkedin.com/in/advanced-fire-suppression-technologies-928bb7146](https://www.linkedin.com/in/advanced-fire-suppression-technologies-928bb7146)



SUPPRESS MOBILE EQUIPMENT FIRES

The system agent provides both fire suppression and superior cooling of superheated surfaces while blanketing the fuel and cutting off oxygen to help prevent reflash. It flows readily into hard-to-reach areas along the same path flammable liquids may have flowed. The wet chemical agent provides a strong measure of freeze protection along with the foaming properties associated with conventional Class B liquid agents.

Additional system features include the option of a stand-alone, liquid agent system or a twin-agent concept with dry chemical; 30- to 60-second discharge effective on Class A combustibles; pre-mixed 18.9L containers for convenient filling of the agent tank; tank capacity of 18.9L to 113.6L; ease of maintenance and recharge; proven external pressurisation cartridge; effective operating range of -40°C to 60°C; flexible design and installation parameters; and multiple detection and actuation options.

MOBILE EQUIPMENT PROTECTION

- » Rapid flame knockdown, cooling and securement
- » Automatic or manual operation
- » 24/7 fire detection
- » Multiple design options
- » FM approved and CE marked

The LVS Fire Suppression System is used on vehicles and equipment in these industries:

- » Agribusiness
- » Aviation
- » Forestry
- » Metal processing
- » Mining
- » Power generation/utilities
- » Transportation
- » Waste processing, and more



PROTECTION STARTS WITH 24/7 DETECTION

The CHECKFIRE system is used with the LVS system to provide around-the-clock, automatic, fire detection and actuation. The rugged control module is designed to withstand shock, vibration and extreme environmental conditions.

For more information go to
www.advancedfst.co.za